

Trilocale  
con giardino



sup. appartamento  
91,3 m<sup>2</sup>



loggiato  
18,7 m<sup>2</sup>



giardino  
da  
62 m<sup>2</sup>



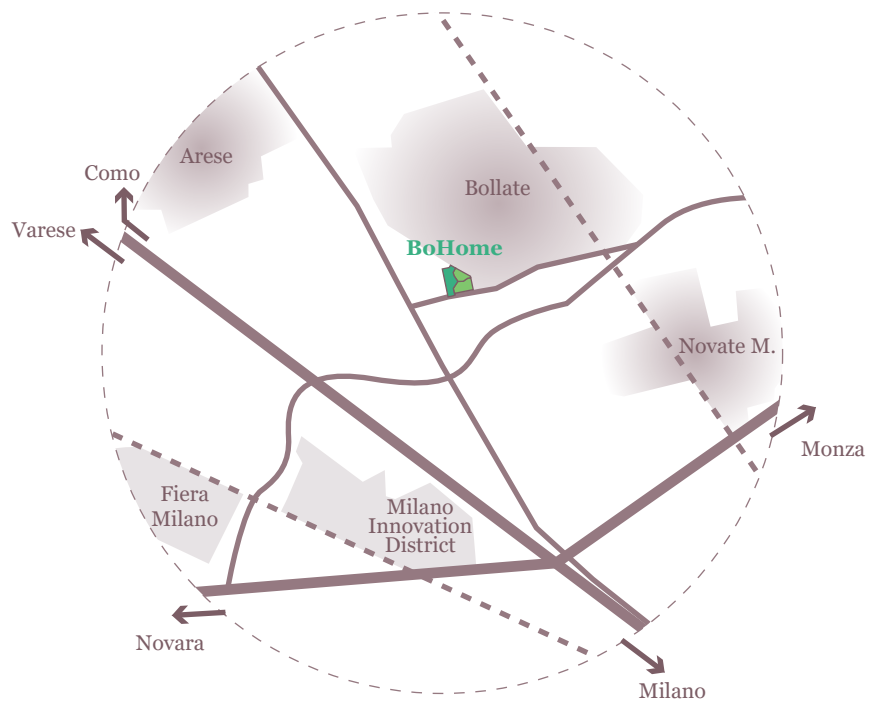
camere  
2

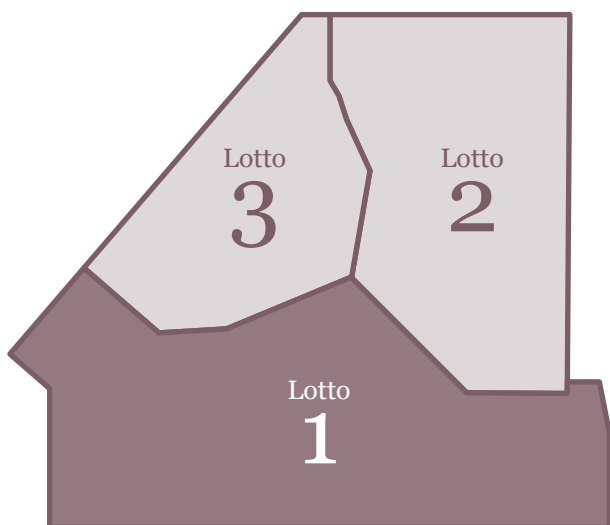


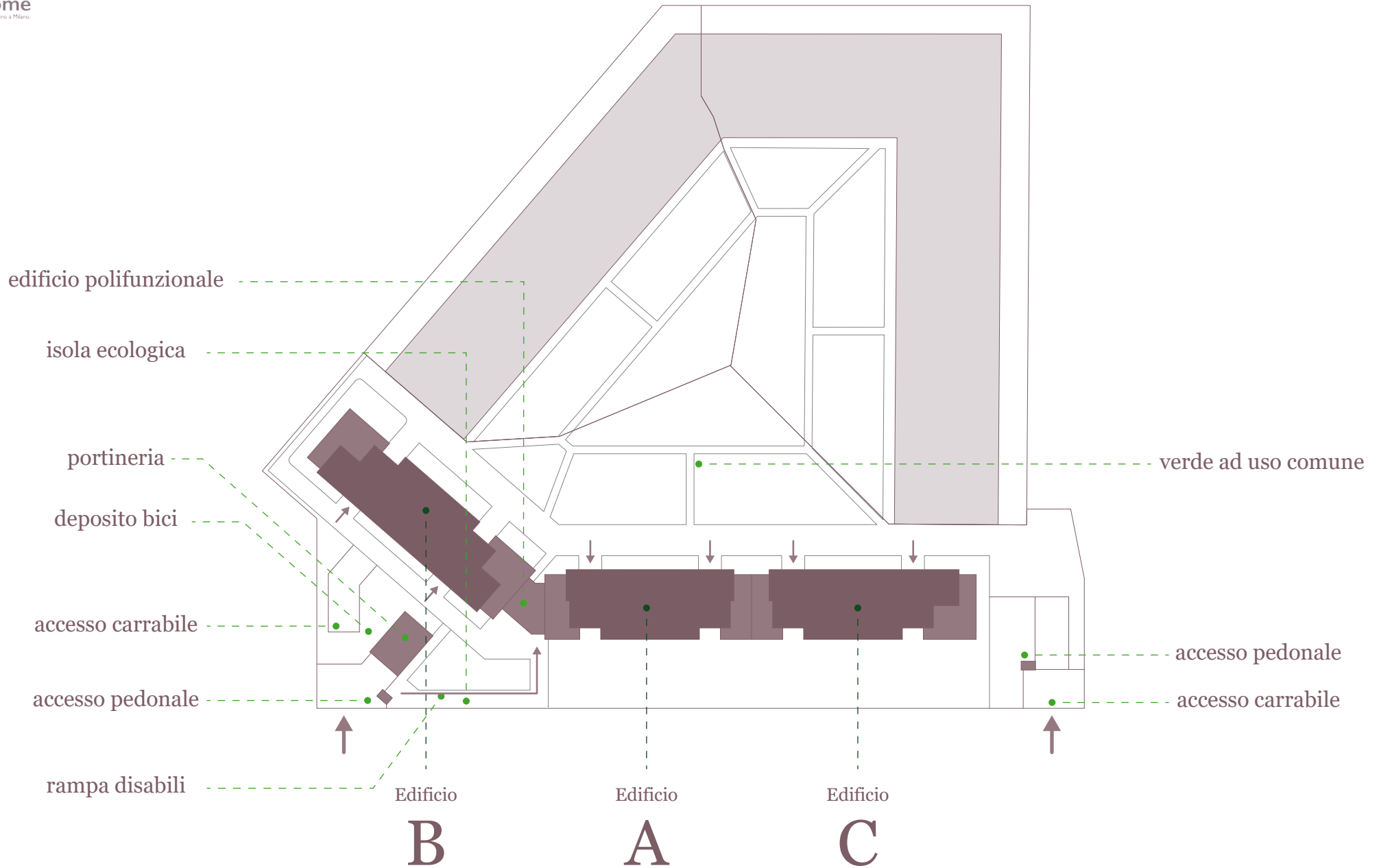
bagni  
2



piano  
terra

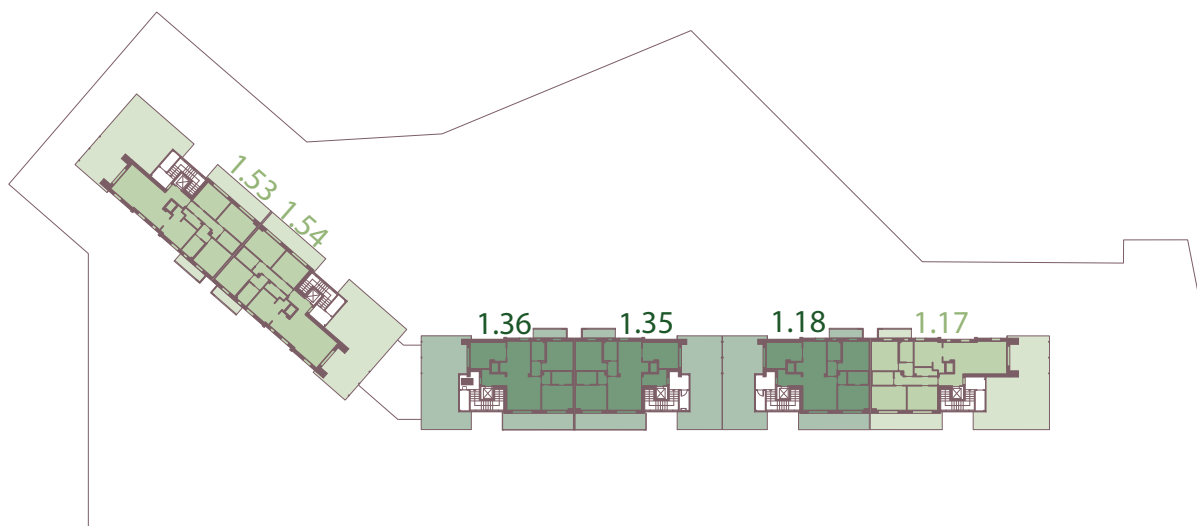
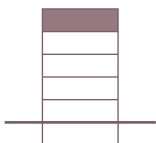






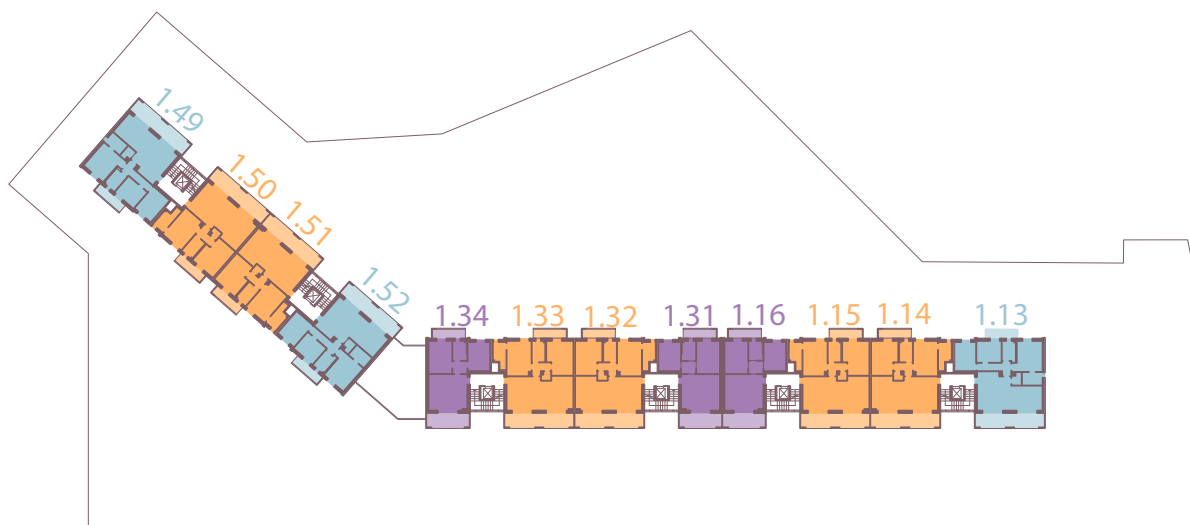
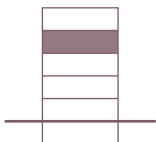
Piano

4



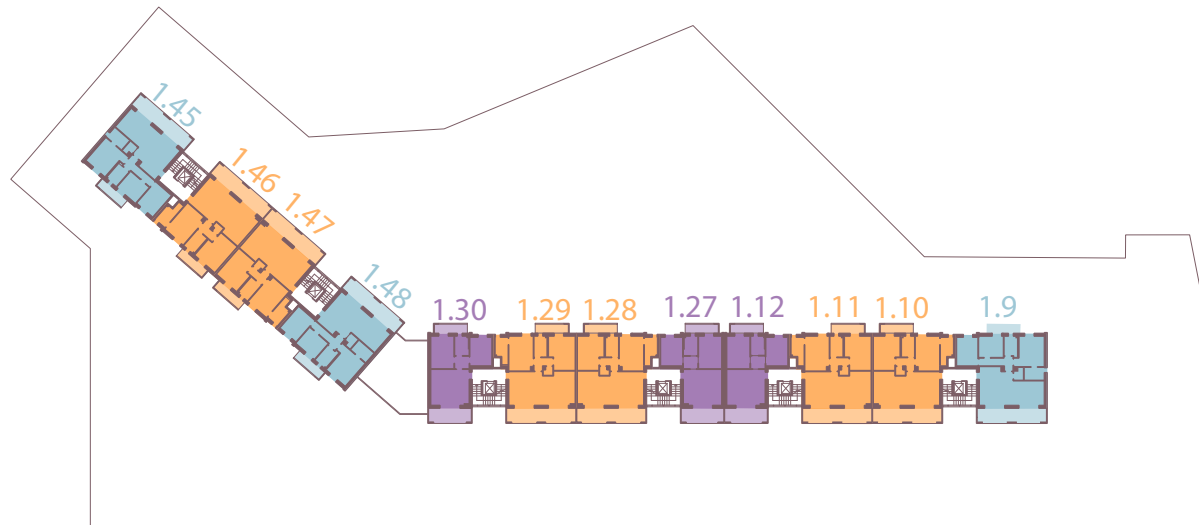
Piano

3



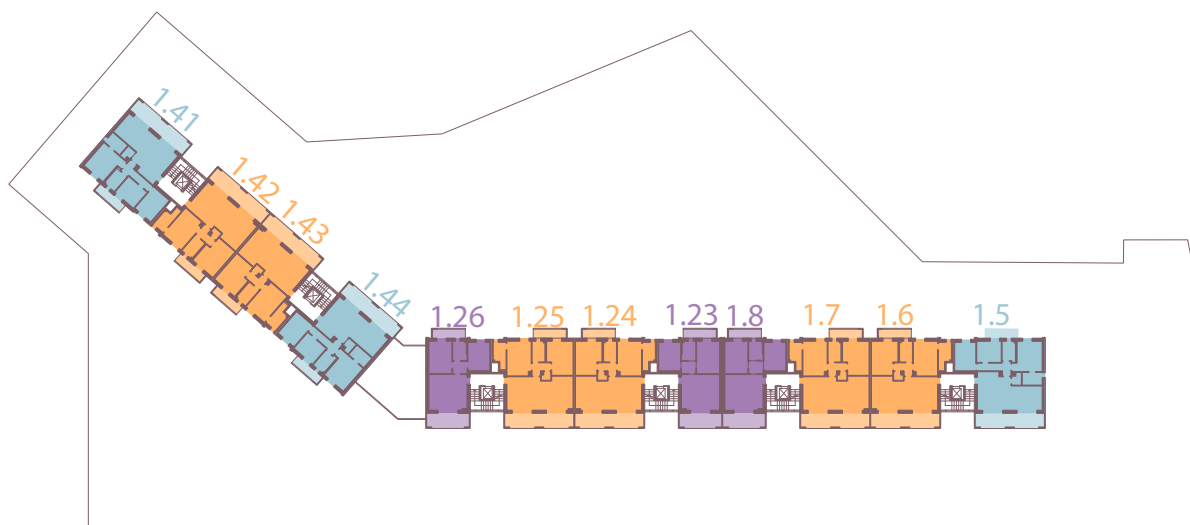
Piano

2



Piano

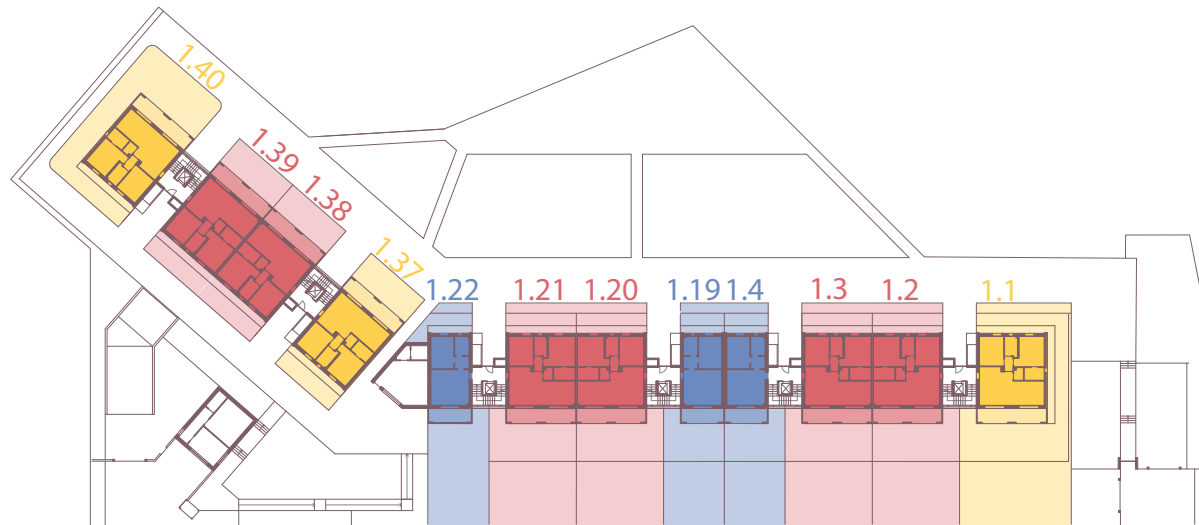
1





Piano

0



Piano

-1

