

\* in questa tipologia il secondo bagno può essere finestrato o non finestrato a seconda della posizione dell'unità all'interno dell'edificio.

**FOR SALE** **Quadrilocale**

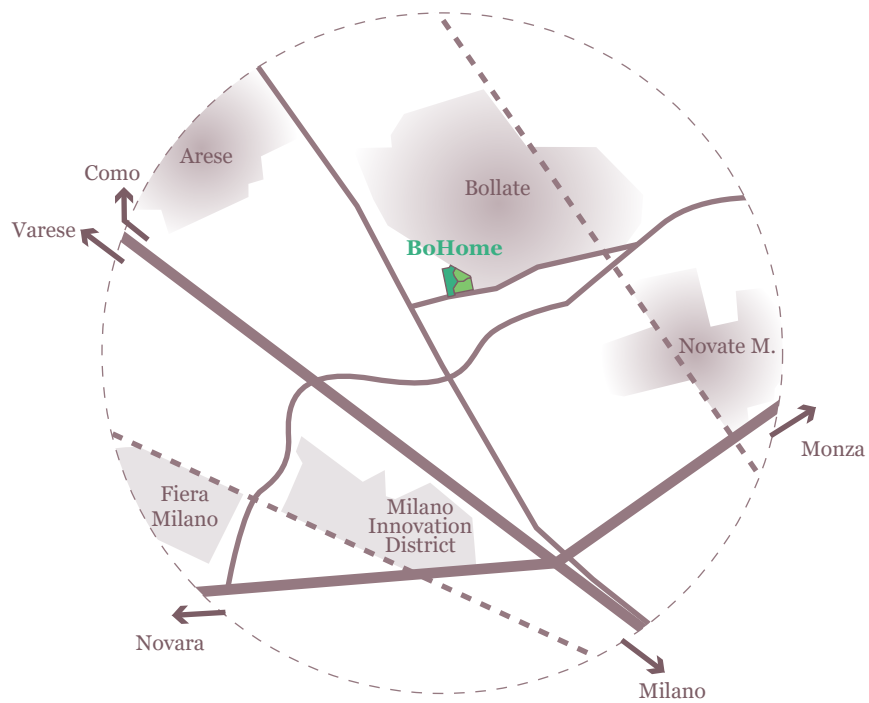
sup. appartamento  
**104,4 m<sup>2</sup>**

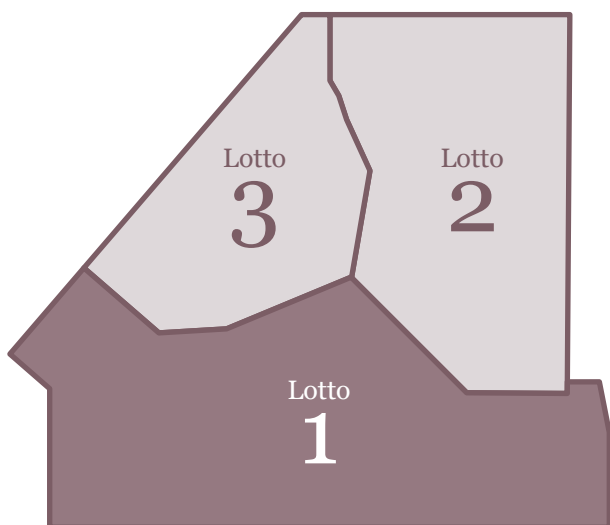
loggiato - balcone  
**24,3 m<sup>2</sup>**

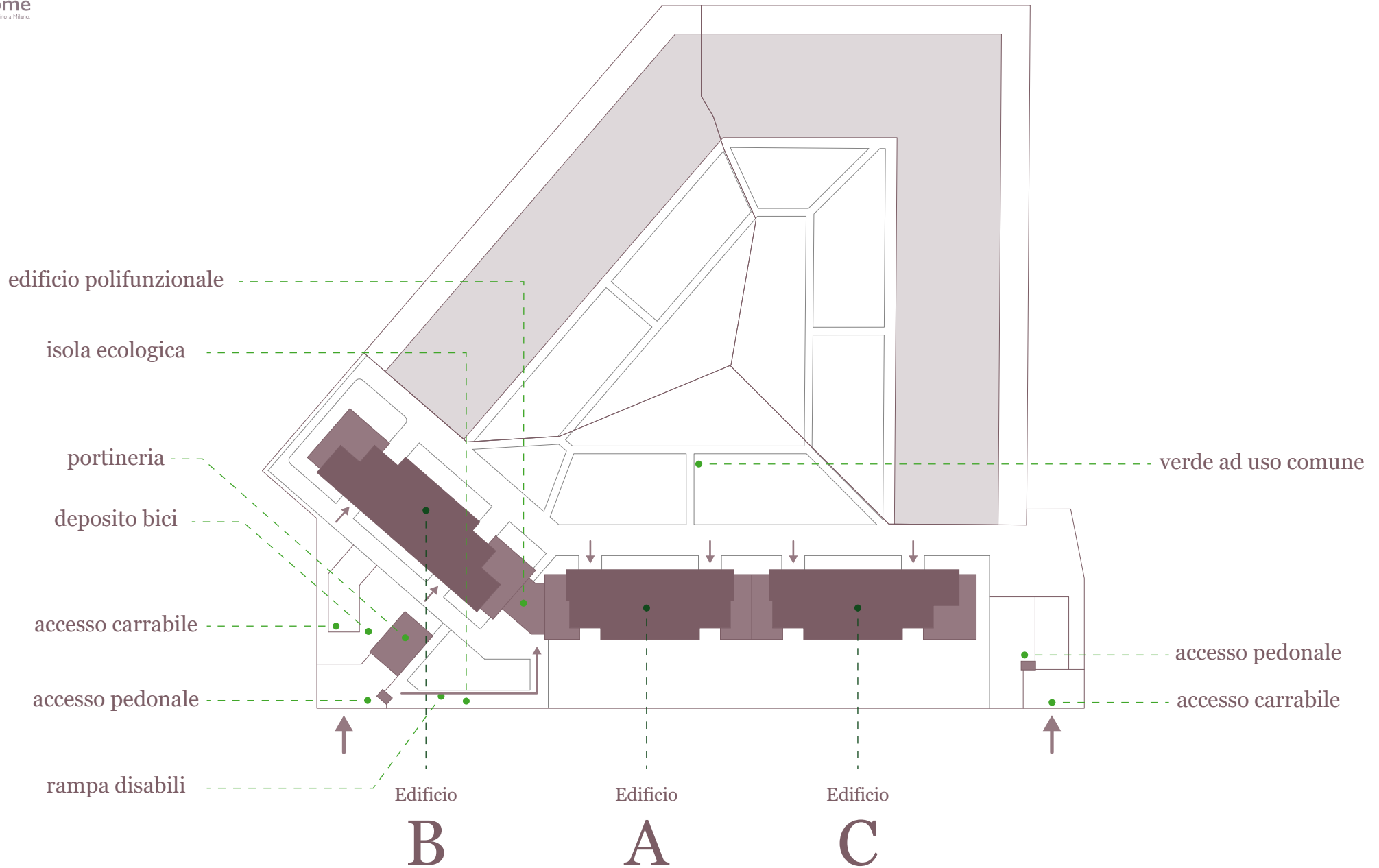
camere  
**3**

bagni  
**2**

piano  
**1°-2°-3°**

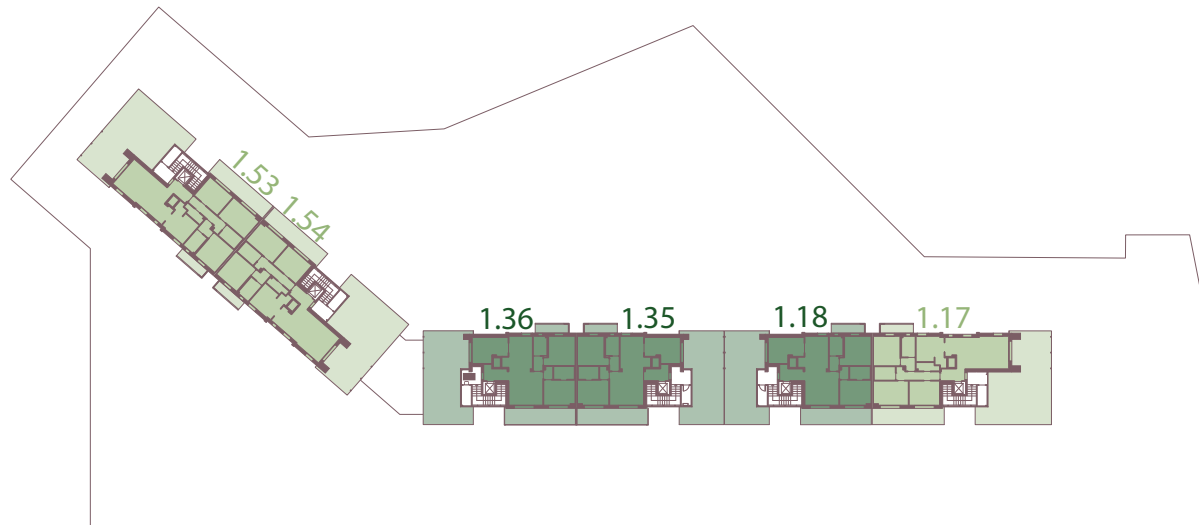






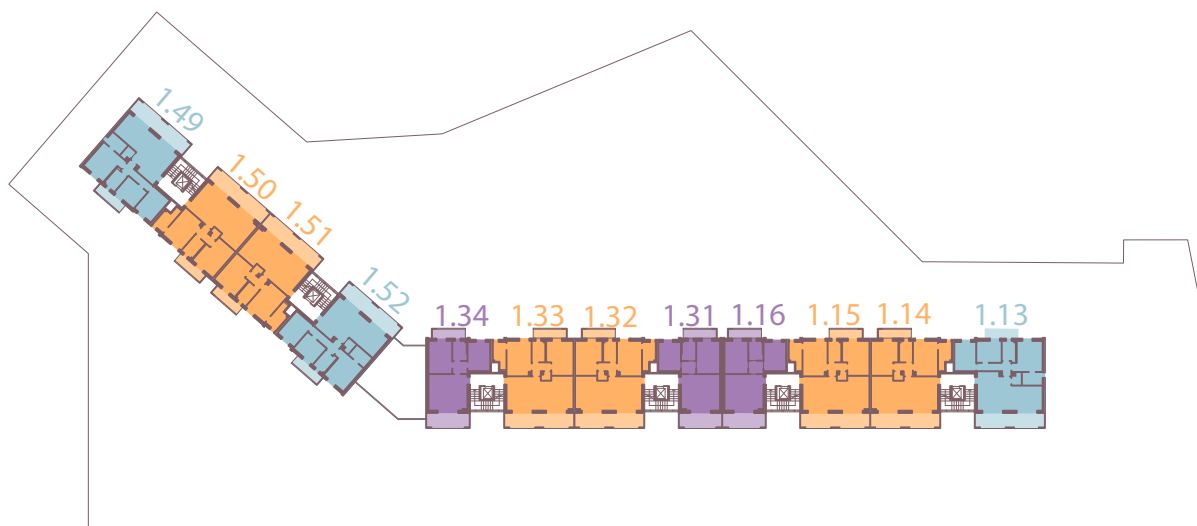
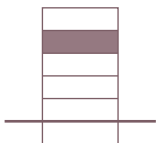
Piano

4



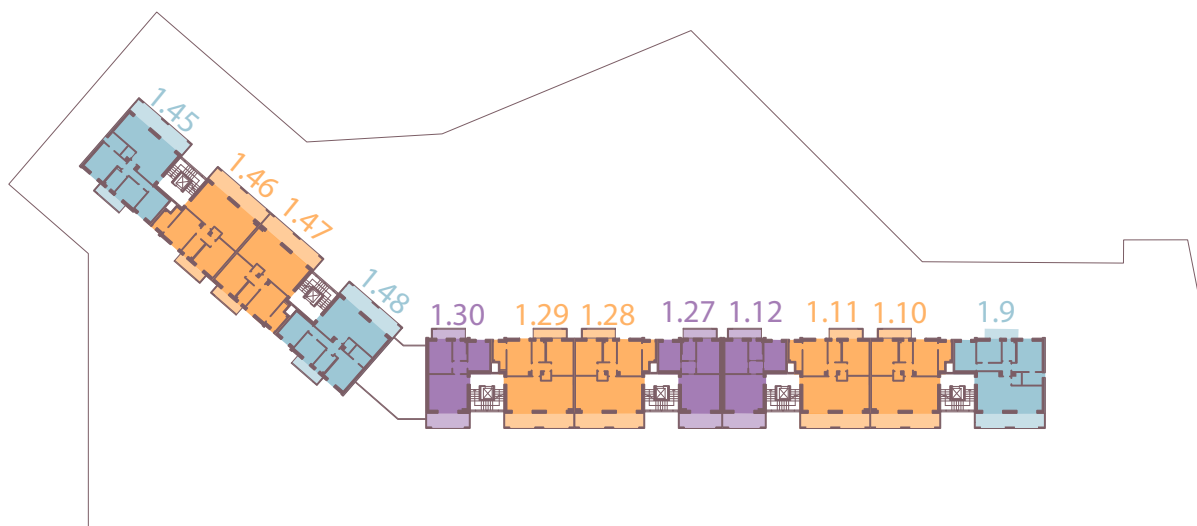
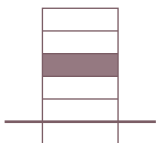
Piano

3



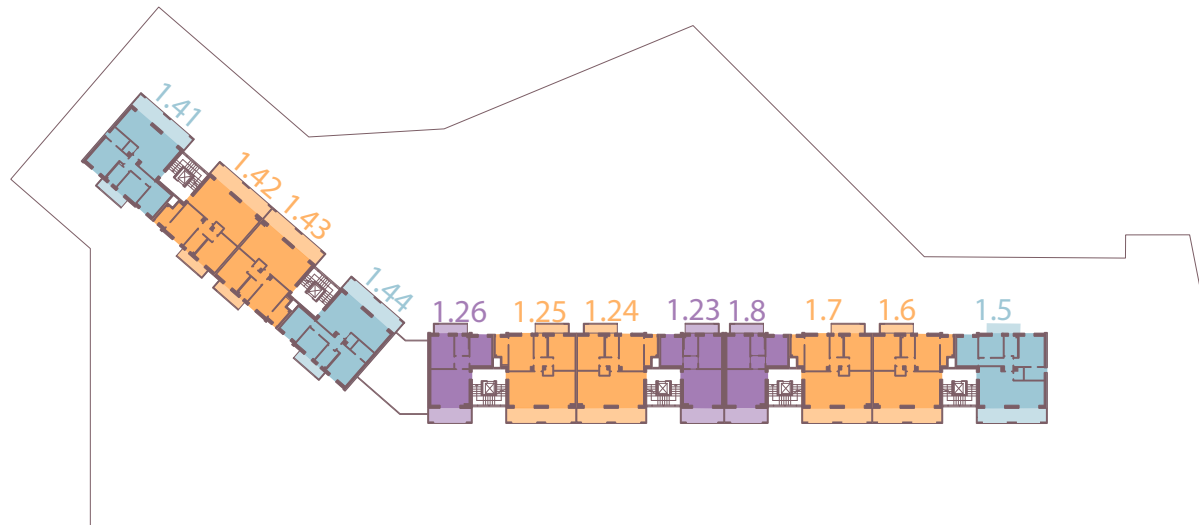
Piano

2



Piano

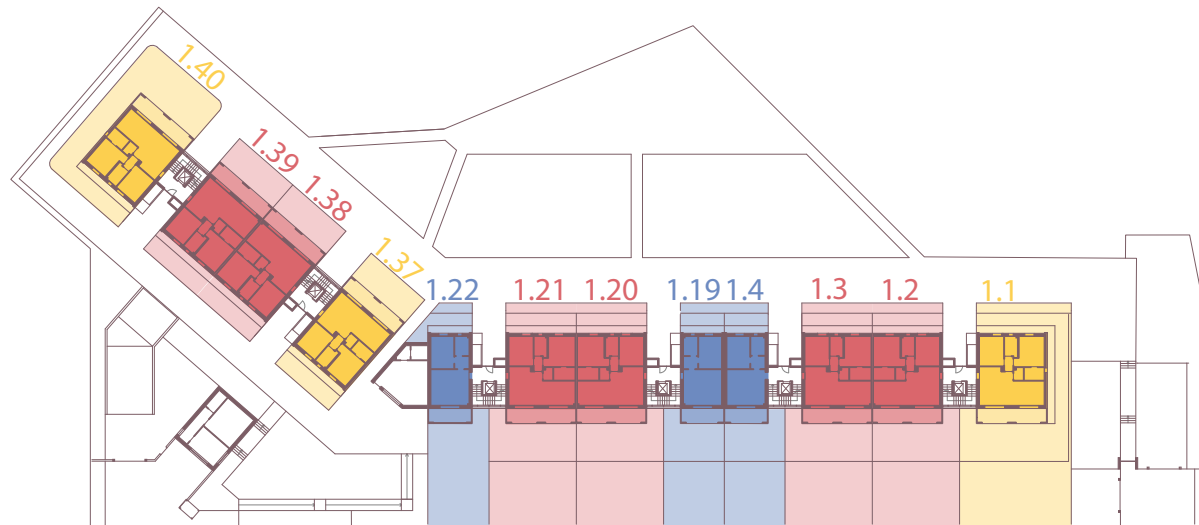
1





Piano

0



Piano

-1

