

\* in questa tipologia il secondo bagno può essere finestrato o non finestrato a seconda della posizione dell'unità all'interno dell'edificio.



Trilocale



sup. appartamento  
97,3 m<sup>2</sup>



loggiato - balcone  
24,3 m<sup>2</sup>



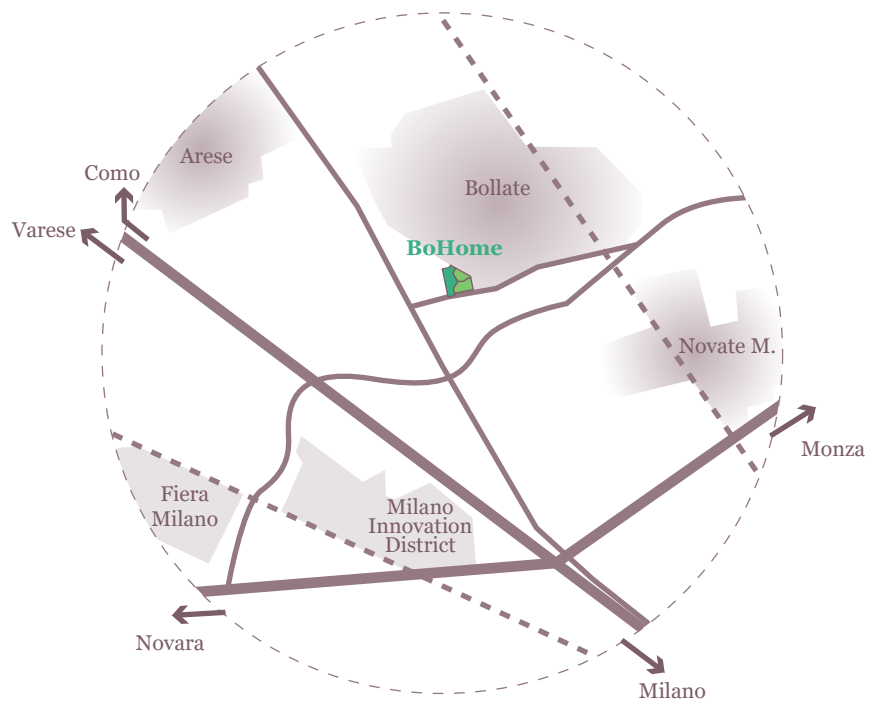
camere  
2

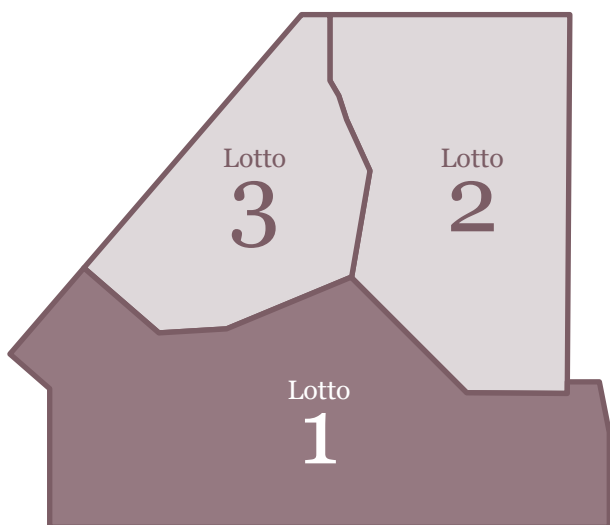


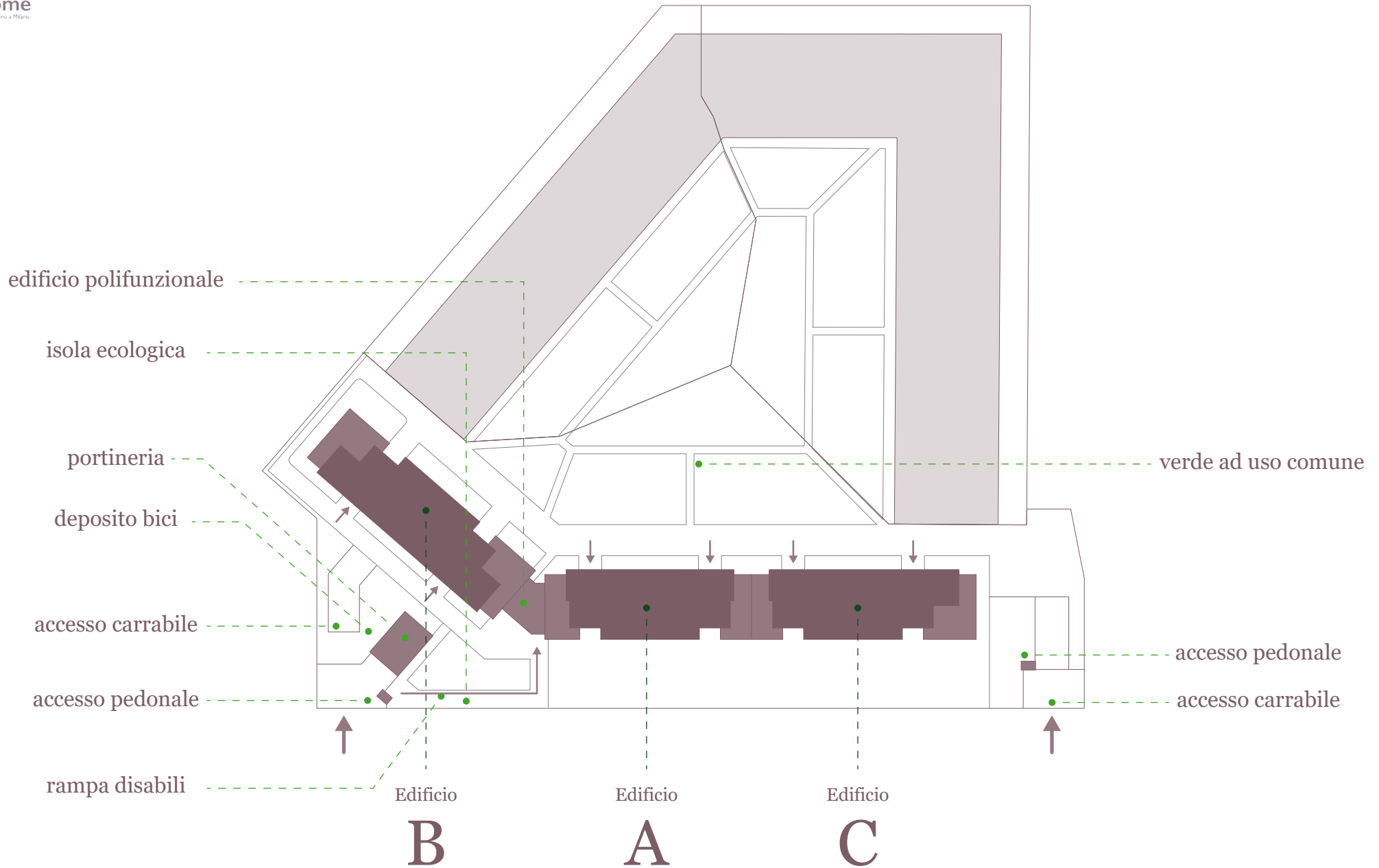
bagni  
2



piano  
1°-2°-3°

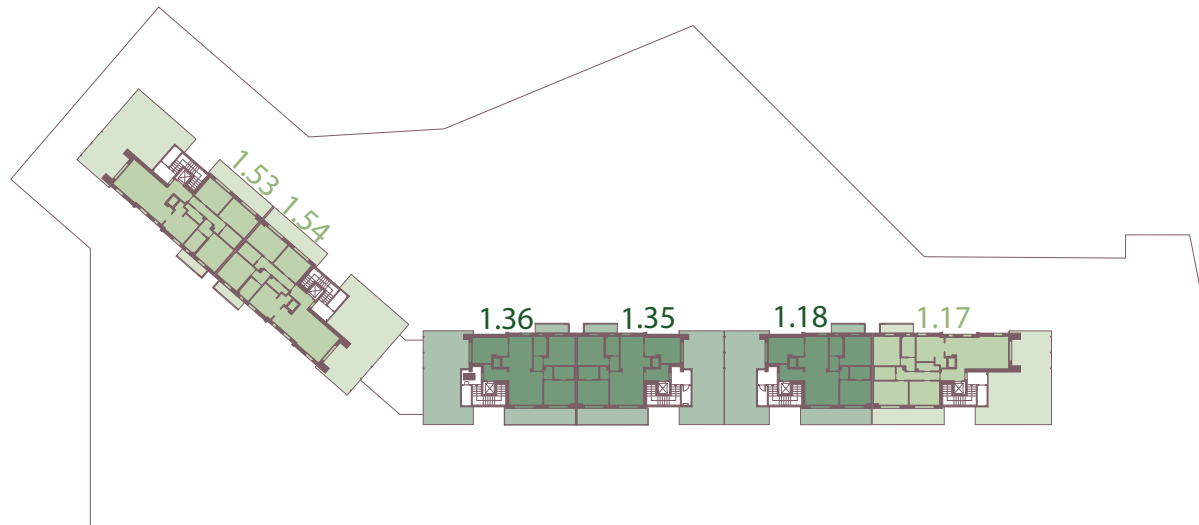






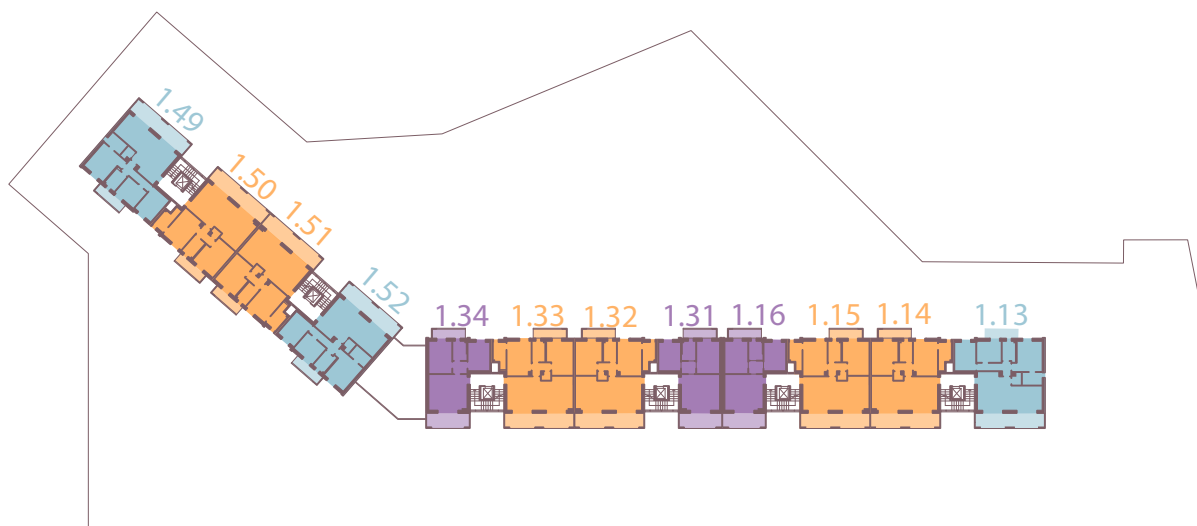
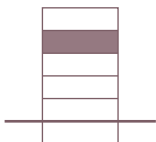
Piano

4



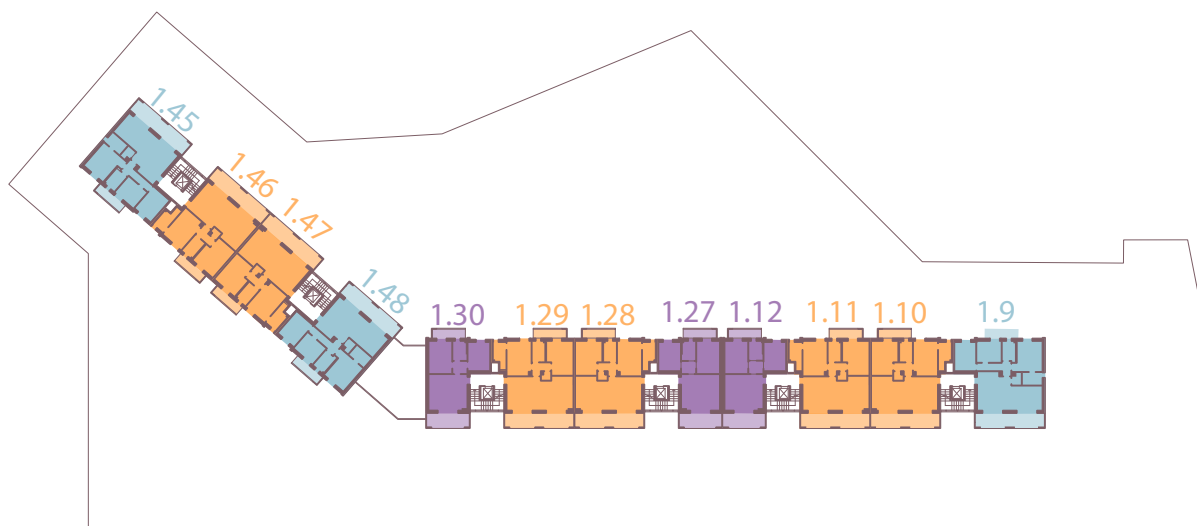
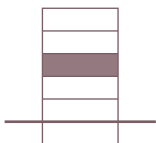
Piano

3



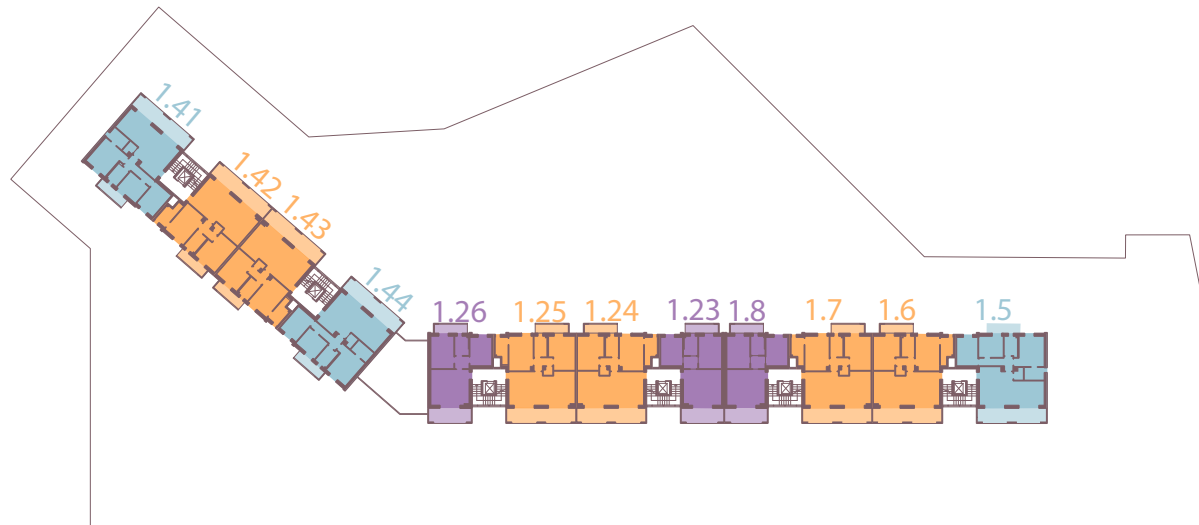
Piano

2



Piano

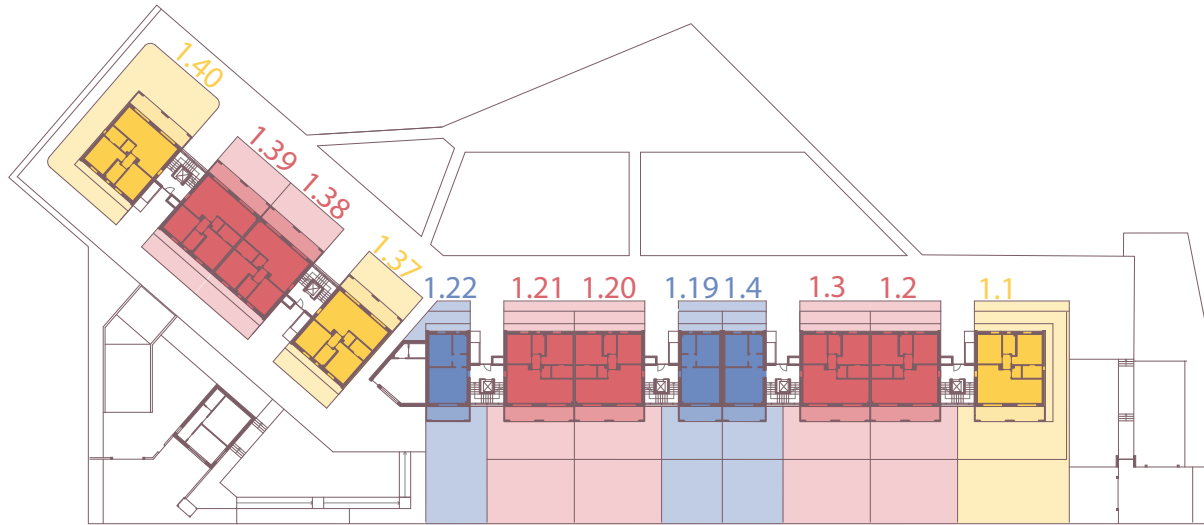
1





Piano

0



Piano

-1

